

Series 5482 - Wet/Wet Differential Pressure Transducer

- ▶ 1% Error Band over -20 to +80°C
- ▶ Ranges from 30mbar to 20bar
- ▶ 24V a.c/d.c input option
- ▶ Line pressure 34bar

This series of miniature differential pressure transducers have a piezo-resistive sensor and a unique conductive seal that eliminates internal wire bonding thus enhancing reliability. Zero and full-scale adjustments are provided under the top cover. They are ideal for use in areas requiring exact pressure measurement, low hysteresis and long-term stability. For all applications where air, oil or water is to be monitored. The unit is supplied with mounting bracket and integral 1 metre cable

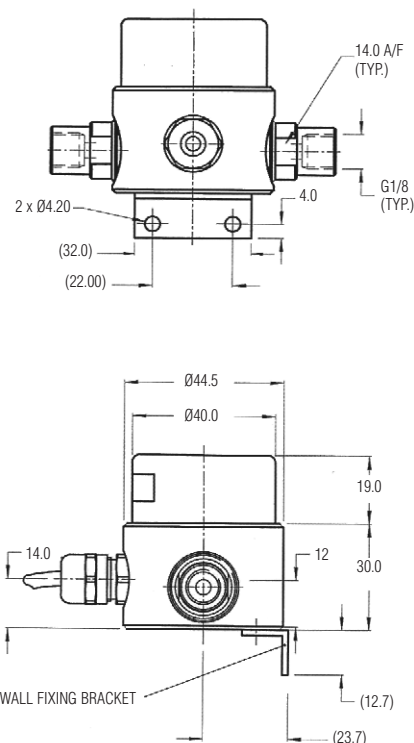
Specifications

Input	
Pressure Range	30mbar to 20bar with intermediate ranges to suit application
Proof Pressure	1.5 x FS
Line Pressure	34bar G max
Performance	
Long Term Drift	0.2% per year typical
Accuracy	±0.25%FS
Thermal Error	±1%
Compensated Temperature Range	-20° to +80°C
Operating Temperatures	
Zero Tolerance	±0.2%
Span Tolerance	±0.2%
Mechanical Configuration	
Pressure Port	G1/8"AT Internal
Wetted Parts	Compatible with air, water and oil
Electrical Connection	1metre cable
Approvals	CE
Weight	250grams

These transducers must be adequately earthed to meet EN 61000-6-2.

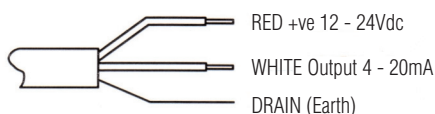


Dimensions (in mm)

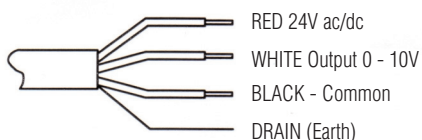


Electrical Connections

Type 5482A: mA Output



Type 5482B: Voltage Output



How To Order

5482 B Range 400mbar
Output S - 0 - 10V
B - 4-20mA

DIFFERENTIAL PRESSURE

PRESSURE TRANSDUCERS

www.gemssensors.com